






16/27 Bennelong Parkway WENTWORTH POINT NSW

2  1  1 

OPEN HOUSE CANCELLED SATURDAY 7/6/14

Positioned in the popular "Mariners Cove" complex situated on Sydney's inner-harbour peninsula, this luxurious and affordable apartment offers you something special with uninterrupted Sydney Olympic views.

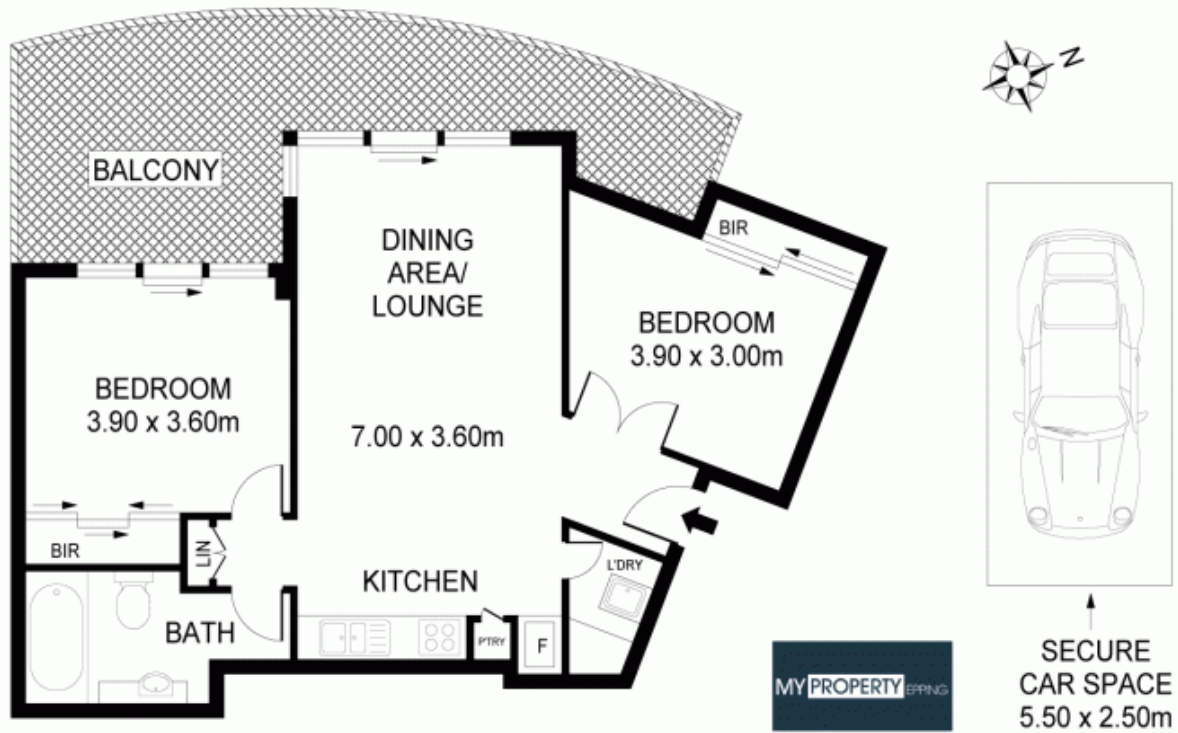
Residents in the complex will also enjoy the first-class facilities which include your own private man-made (lagoon) style beach, picturesque & heated swimming pool, fully equipped gymnasium, steam room and access to your own library.

This 2 bedroom security apartment enjoys a light filled floor plan with a large timber deck, a perfect setting for relaxing or entertaining in style.

View : <https://www.mypropertyepping.com.au/lease/nsw/inner-west/wentworth-point/residential/apartment/5674842>



Peter Horozakis
(02) 9868 4888



16/27 BENNELONG PARK WAY, WENTWORTH POINT

Measurements are approximate. Not to Scale. For illustrative purposes only.