

4/24-32 Edensor Street Epping NSW

2 1 1

Ideal 2 bed-mid floor unit overlooking pool.

Set in a well maintained complex with an exquisite in-ground swimming pool, this 2 bedroom home unit enjoys a prominent Northerly aspect and is surrounded by park like grounds and leafy gardens. It also provides a feeling of serenity, peace and quietude that is remarkable, considering it is an easy walk from the main hub of activity in Epping.

High Points

Approx 7 minute walk to Epping station, shops, dining and schools

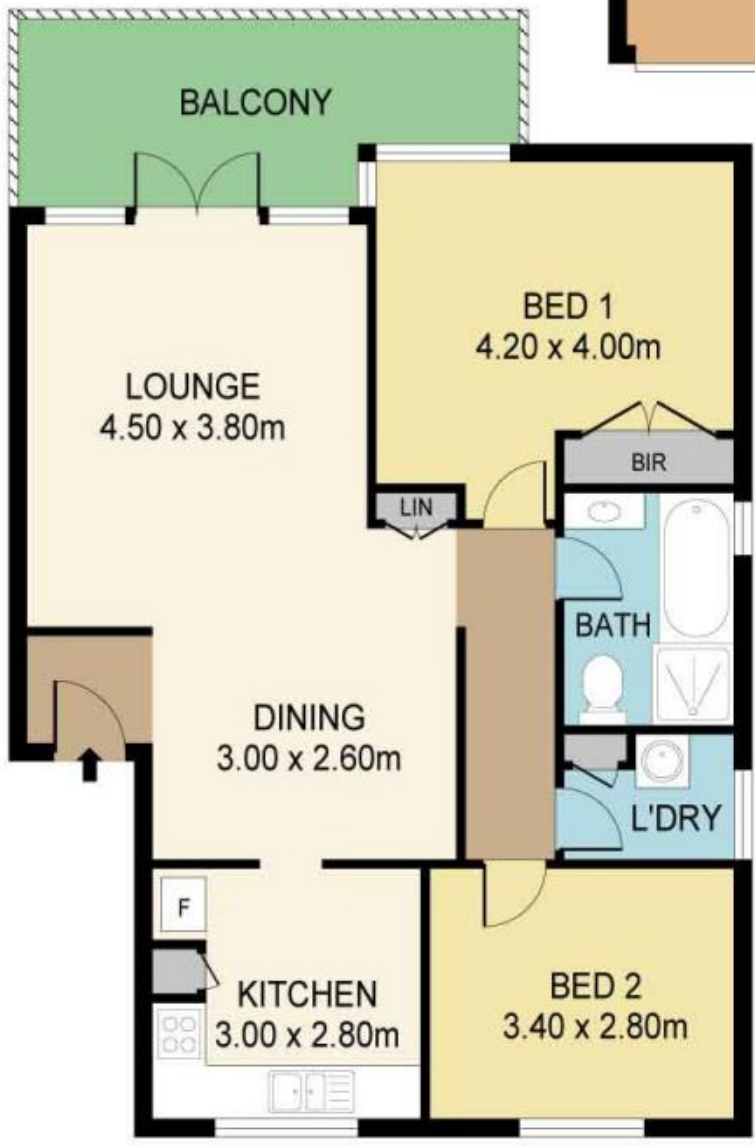
Full brick with light filled interiors and a desirable mid-floor position

Land Size : 108.6 sqm

View : <https://www.mypropertyepping.com.au/lease/nsw/northern-suburbs/epping/residential/unit/5674997>



Peter Horozakis
(02) 9868 4888



4/24-32 EDENSOR ST, EPPING

Measurements are approximate. Not to Scale. For illustrative purposes only.