



205/2 Galara Street Rosebery NSW

1 1 1

Sunny Near New Apartment with Ducted A/C, Storage & Parking.

Bathed in natural light and almost new throughout, this stunning 1 bedroom security apartment offers a lifestyle of unrivaled quality and substance in a coveted new and popular community.

Superbly presented, it is simply a matter of minutes to the City (buses 50m away), Airport, eastern beaches and the University of New South Wales. Everything you need just minutes away!

Directions: From Epsom Rd, turn into Dalmeny Ave and then approx. 50 metres on left hand side turn into Galara Street.

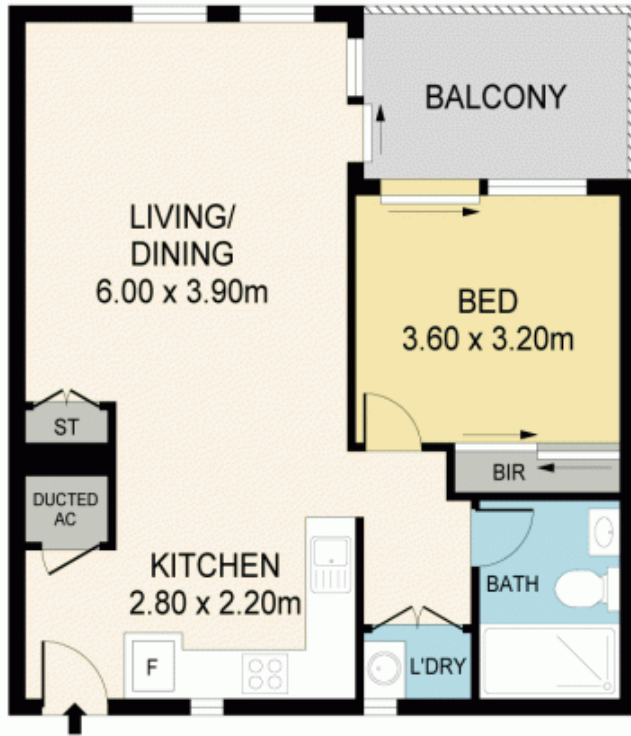
Building Size : 73 sqm
View : <https://www.mypropertyepping.com.au/lease/nsw/eastern-suburbs/rosebery/residential/apartment/5675379>



Peter Horozakis
(02) 9868 4888



Jimm Nestoras
(02) 9868 4888



STORAGE



CAR SPACE
5.60 x 2.40m



205/2 GALARA ST, ROSEBERY

Disclaimer; Please note that while the information contained in this floor plan is provided by reliable sources, we cannot guarantee its accuracy. It is intended as a guide only. Interested parties should rely on their own enquiry. Drawing not to scale. Dimensions are approximate.

