



**2/10 Edward Street Ryde NSW**

2 1 1

Newly Painted with New Timber Floors - Highly Convenient & Walk to Everything.

**View :** <https://www.mypropertyepping.com.au/lease/nsw/northern-suburbs/ryde/residential/unit/7308534>

Register your interest now...Landlord seeking a quality long term tenant.

Nestled in a quiet street, this spacious two bedroom ground floor unit is located in a security building located only seconds walk to Top Ryde City Shopping Centre, quality cafes, restaurants, park land and transport. Everything you need just around the corner.

With its updated interiors, it makes it extremely appealing on the rental market and we encourage all interested parties to inspect and apply within.

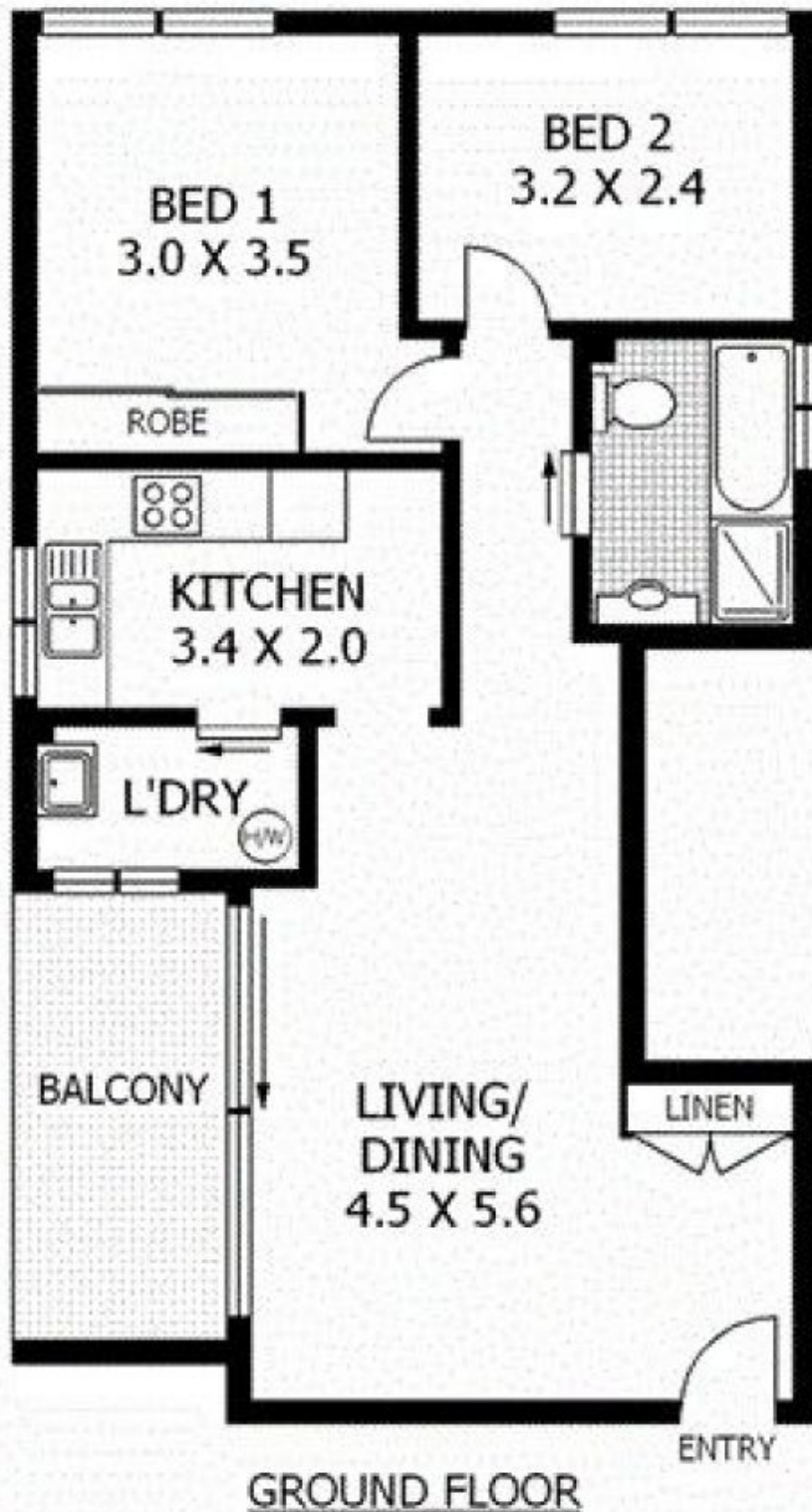


**George Horozakis**  
(02) 9868 4888



**Peter Horozakis**  
(02) 9868 4888

HIGH POINTS



**NOTE :- SINGLE LOCK UP GARAGE ON TITLE**



**2/10 EDWARD STREET**

**RYDE**

**MY PROPERTY EPPING**

**SCAPE Floor Planning Disclaimer:** This floor plan is conceptual only. It is provided for purposes only and should not be relied upon. We make no guarantee as to the correctness of the plan. All interested parties should make and rely on their own enquiries in determining the accuracy of the information contained in this floor plan.