



12/29-31 First Street Kingswood NSW

2 1 1

Popular Park-Side Unit in Walk to Everything Locale.

Popular Unit Complex in highly convenient locale - Walk to Station and popular amenities, be quick to inspect as it will not last long!

Positioned in an ideal "walk to everything" location, within walking distance to Nepean Hospital, schools, shops and train station, this freshly painted two bedroom security apartment boasts spacious interiors and an abundance of natural sunlight.

This apartment is an ideal opportunity that cannot be overlooked.

HIGH POINTS

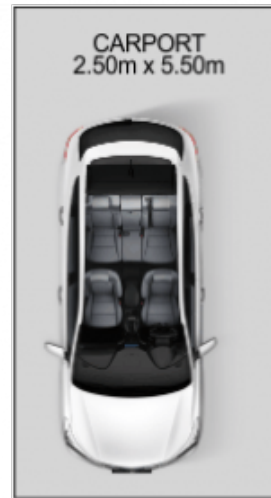
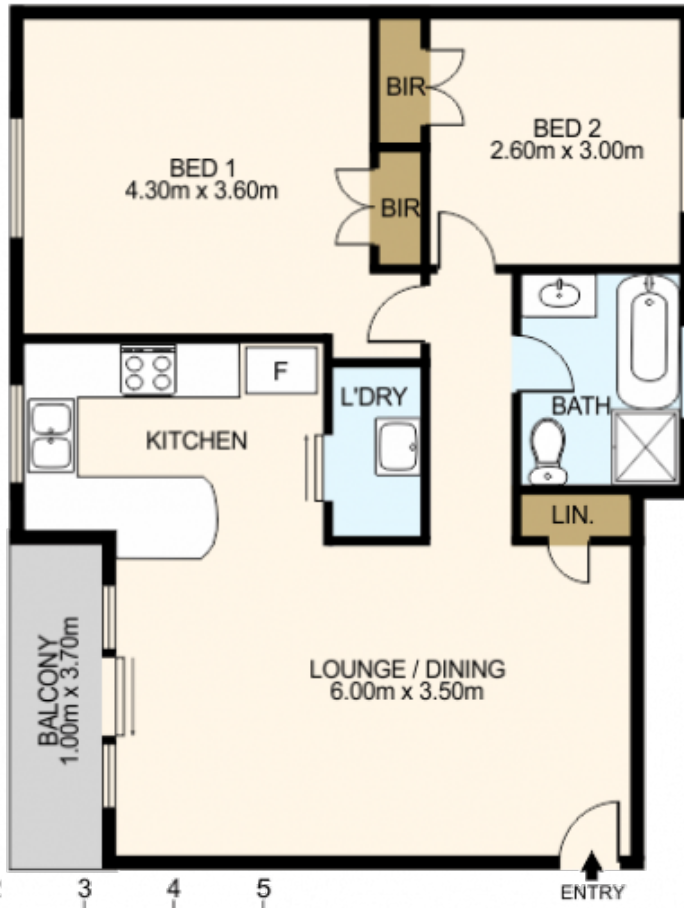
Building Size : 85 sqm
View : <https://www.mypropertyepping.com.au/lease/nsw/western-sydney/kingswood/residential/unit/8007227>



George Horozakis
(02) 9868 4888



Peter Horozakis
(02) 9868 4888



DISCLAIMER: THIS IS FOR ILLUSTRATIVE PURPOSES ONLY. ALL DIMENSIONS ARE APPROXIMATE AND IT DOES NOT CONSTITUTE PART OF ANY LEGAL DOCUMENTS.

ADDRESS:

12/29-31 First St, Kingswood