



5 Liege Street Russell Lea NSW

5 🛏 3 🚿 3 🚗

Inspect: By Private Appointment...Call Peter Horozakis on 0402 870 202 or Rob Luck on 0416 277 990.

Offered for the first time in over 45 years, here is your dream home!

Located on the prestigious North-East side of Russell Lea, 'Drumgelloch' offers the ultimate in spacious Family Living in one of Sydney's most sought-after suburbs. This traditional 1916 full-brick California Bungalow was extended in 2009 to provide capacious indoor-outdoor living and entertaining space on the ground floor and expanded in 2014 with a 4-bedroom, 2-bathroom accommodation on the second storey.

An imposing traditional wrought-iron security door provides entry to the central hallway which opens to the large

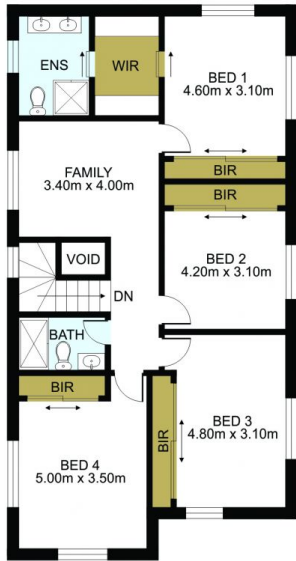
Price : FOR SALE - Contact Agent
Land Size : 404.7 sqm
View : <https://www.mypropertyepping.com.au/sale/nsw/inner-west/russell-lea/residential/house/8018292>



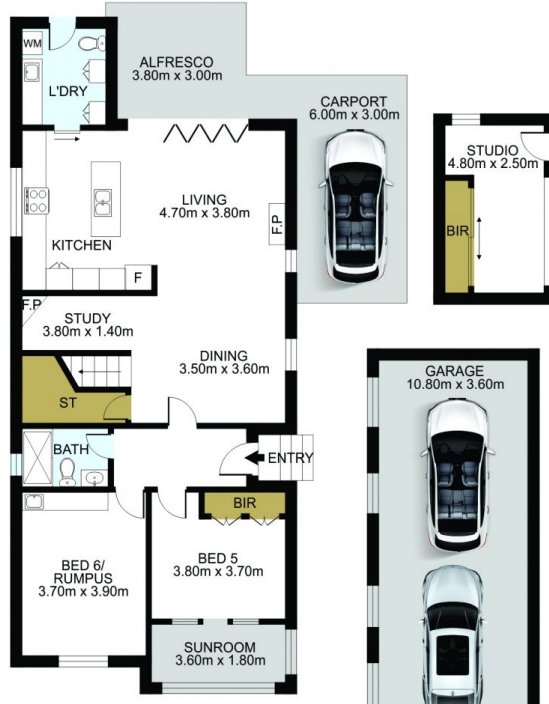
Peter Horozakis
(02) 9868 4888



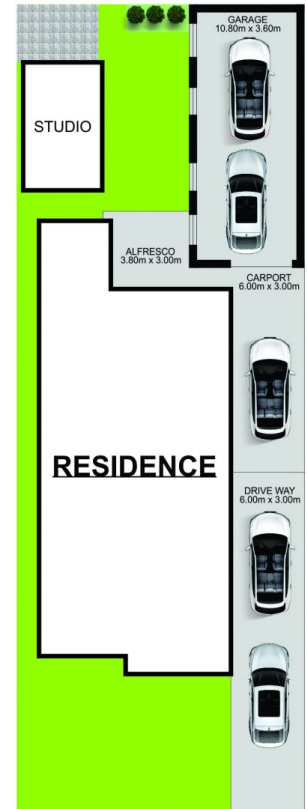
Rob Luck
(02) 9868 4888



Upper Level



Ground Level



Site Plan Not On Scale



DISCLAIMER: THIS IS FOR ILLUSTRATIVE PURPOSES ONLY. ALL DIMENSIONS ARE APPROXIMATE AND IT DOES NOT CONSTITUTE PART OF ANY LEGAL DOCUMENTS.

ADDRESS:

5 Liege Street, Russell Lea