



10/10-16 Castlereagh Street Liverpool NSW

3 2 2

House-Sized Modern Apartment - Walk to Everything (178m²).

Located in the heart of Liverpool with amenities at your doorstep, this well presented 3-bedroom unit is great opportunity for all investors. Perfectly positioned on the second-floor, it allows for a spacious layout, ample natural light and a covered entertainers balcony that encourages indoor-outdoor living.

With its location one of its biggest assets, Westfield Liverpool, station & hospital are within easy walking distance and you're close to popular schools, public transport and parks. Everything you need just around the corner!

[For full version visit the website](https://www.mypropertyepping.com.au/sale/nsw/liverpool-fairfield/liverpool/residential/apartment/8135051)

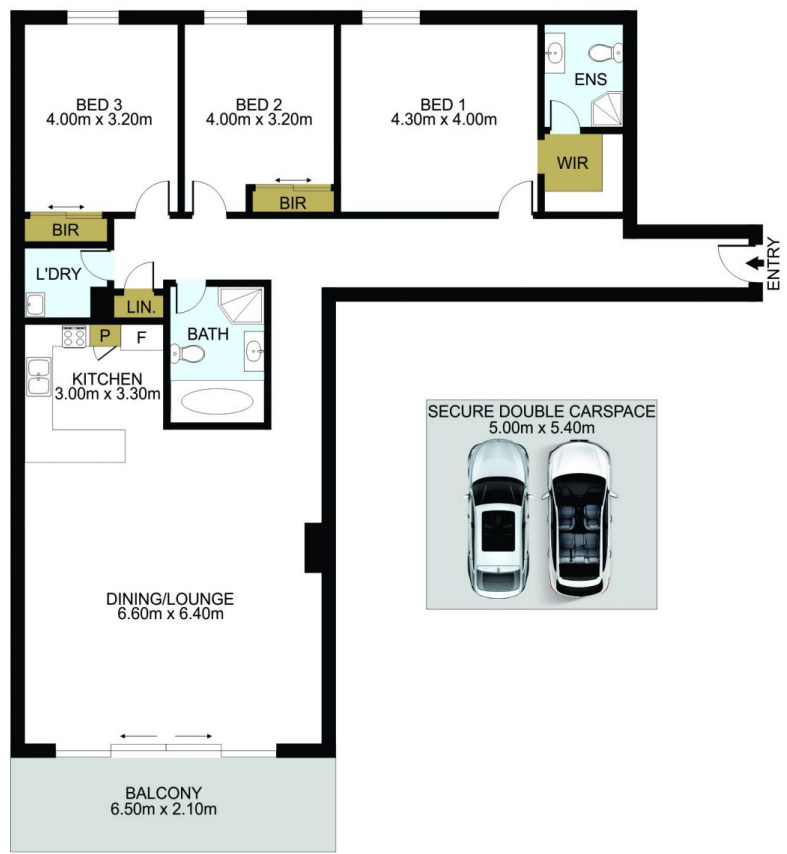
Type : Apartment
Price : \$ 632,000
Building Size : 150 sqm
Land Size : 178 sqm
View : <https://www.mypropertyepping.com.au/sale/nsw/liverpool-fairfield/liverpool/residential/apartment/8135051>



Peter Horozakis
(02) 9869 4888



George Horozakis
(02) 9869 4888



DISCLAIMER: THIS IS FOR ILLUSTRATIVE PURPOSES ONLY. ALL DIMENSIONS ARE APPROXIMATE AND IT DOES NOT CONSTITUTE PART OF ANY LEGAL DOCUMENTS.

ADDRESS:
10/10-16 Castlereagh St, Liverpool