



10 Slate Road Gables NSW

6 4 2

Open Home Inspection: Saturday 19/10/24 between 12.00 - 12.30 pm.

Showcasing a contemporary and modern lifestyle that's second to none at The Gables, this impeccably appointed 6 bedroom home exemplifies spacious and luxury living on a grand scale. There is nothing more important than a good, safe & secure near new home!

Experience quality and comfort in every detail of this amazing home close to multiple schooling options including Santa Sophia College and the upcoming Gables Shopping Centre. Playgrounds, sporting fields are also foot steps away for the family to enjoy.

[For full version visit the website](https://www.mypropertyepping.com.au)

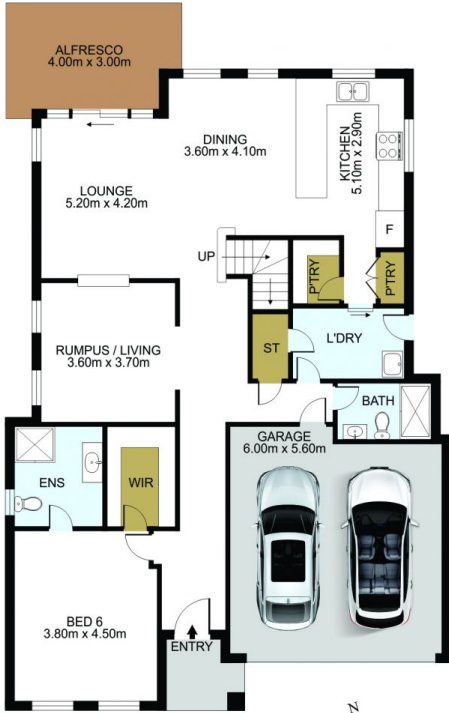
Type : House
Price : AUCTION unless sold prior
Land Size : 450.3 sqm
View : <https://www.mypropertyepping.com.au/sale/nsw/western-sydney/gables/residential/house/8146485>



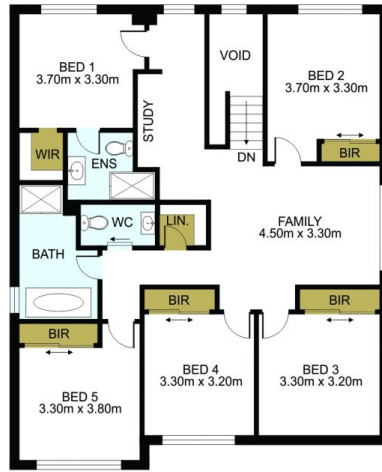
Peter Horozakis
(02) 9868 4888



George Horozakis
(02) 9868 4888



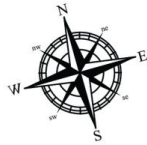
Ground Floor



First Floor



Site Plan
Not On Scale



DISCLAIMER: THIS IS FOR ILLUSTRATIVE PURPOSES ONLY. ALL DIMENSIONS ARE APPROXIMATE AND IT DOES NOT CONSTITUTE PART OF ANY LEGAL DOCUMENTS.

ADDRESS:

10 Slate Rd Gables